

## Jackleg Portable Cabins

Traditional Timber Framed Cabins with fixed point Jacklegs



**Jackleg Portable Cabins** are a mixture of timber and steel framed construction which are finished with "Plastisol" exterior cladding as standard. Plastisol Cladding is a pre-coloured plastic coated steel which is laminated to a high grade 9mm Far Eastern Plywood. This gives our cabins a durable, low maintenance and attractive finish that is suitable for a variety of uses. Doors, fascia, skirting corners and jacklegs can be supplied either in the same colour or an additional colour if preferred.

Other external finishes such as Wood Cladding and Textured are available for alternative costs if required.



### External

- Fixed Point Jack-Legs (optional)
- Plastisol Clad external finish (other finishes available)
- Solid Core Timber Doors - painted (optional Steel Security Doors)
- Single Glazed Aluminium Windows or UPVC double glazed windows
- Security packs available with either steel mesh, steel shutters or roller shutters for the windows
- Large range of colours

### Internal

- Welded and Sealed Vinyl Flooring
- Textured Vinyl Faced Plasterboard walls and Ceiling
- Insulated walls, ceiling & floor
- Fitted consumer unit
- Double power points
- Fluorescent strip lighting
- Electric convector heater

### Available Types

All sizes and configurations are available including: Offices, Canteens, Mess Rooms, Meeting Rooms, Drying Rooms, Welfare Units and Toilet & Shower Blocks.

### Available Sizes

We do have a range of standard sizes but all our units are built to order and as such can be made to suit your needs and requirements. Available sizes are from 4ft to 12ft wide and from 6ft to 40ft long.

**Our Jackleg Cabin Range has a large range of customisable extras to transform your cabin to meet your exact requirements, contact us for further details & prices.**

Updated 30/06/2013

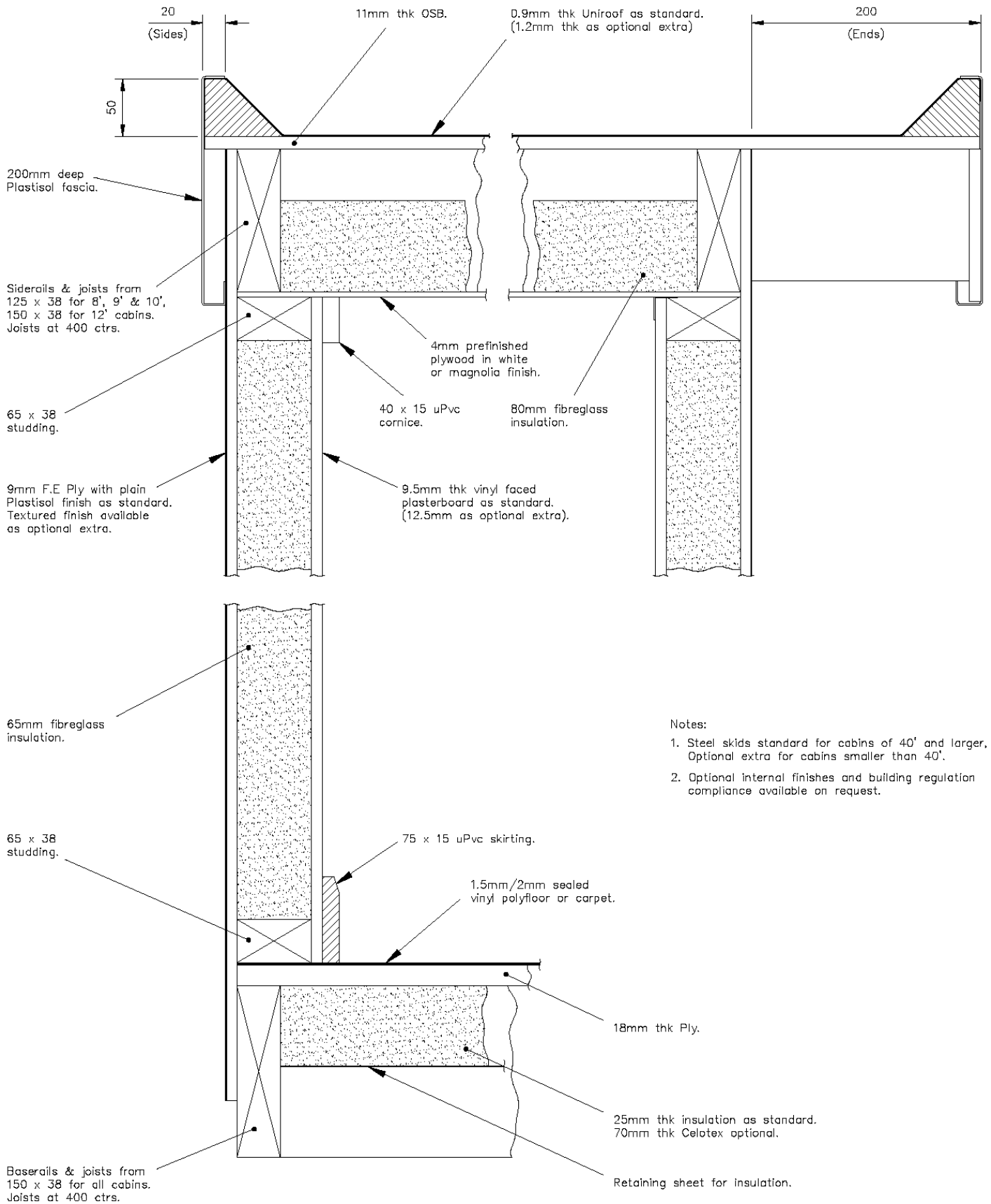


# Cabins and Containers

# 08454 98 91 98

## New and Refurbished Portable Buildings

sales@cabinsandcontainers.co.uk www.cabinsandcontainers.co.uk



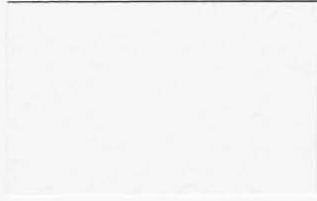
### Notes:

1. Steel skids standard for cabins of 40' and larger. Optional extra for cabins smaller than 40'.
2. Optional internal finishes and building regulation compliance available on request.

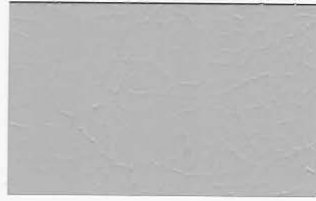


Cabins and Containers (UK) Ltd  
 Hopton Timber Estate, Hall Road  
 Hopton, Norfolk NR31 9AX  
 Registered in England: 07112389  
 VAT Registration No: 988 6560 47





White CD1 00E55



Goosewing Grey CD1 10A05



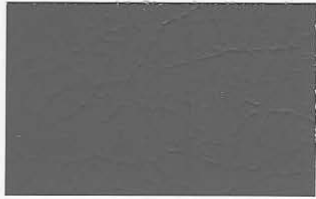
Meadowland CD1 12B17



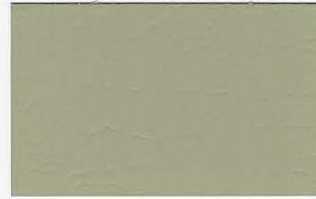
Hamlet CD1 RAL 9002



Albatross CD1 18B17



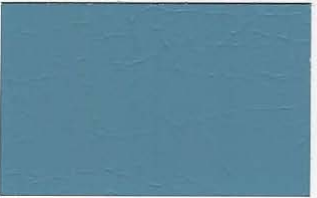
Merlin Grey CD1 18B25



Moorland Green CD1 12B21



Honesty CD1 10C31



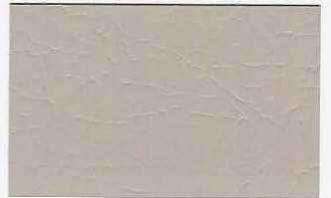
Wedgewood Blue CD1 18C37



Raven CD2 18B29



Heritage Green CD2 RAL 6002



Mushroom CD1 10B19



Ocean Blue CD2 18C39



Anthracite CD2 RAL7016



Olive Green CD1 12B27



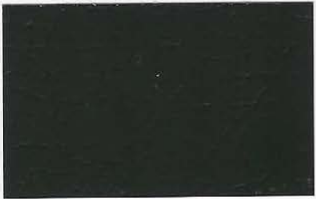
Terracotta CD2 04C39



Sargasso CD2 RAL 5003



Black CD1 00E53



Juniper Green CD2 12B29

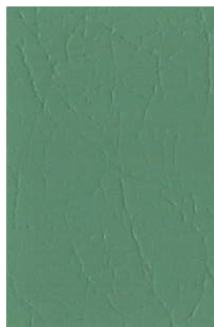


Vandyke Brown CD2 08B29

### Additional Brighter Colours:



Bamboo



Jade



Solent Blue

18E53



Poppy

04E53



Petra

04D44



Aztec Yellow

10E55